

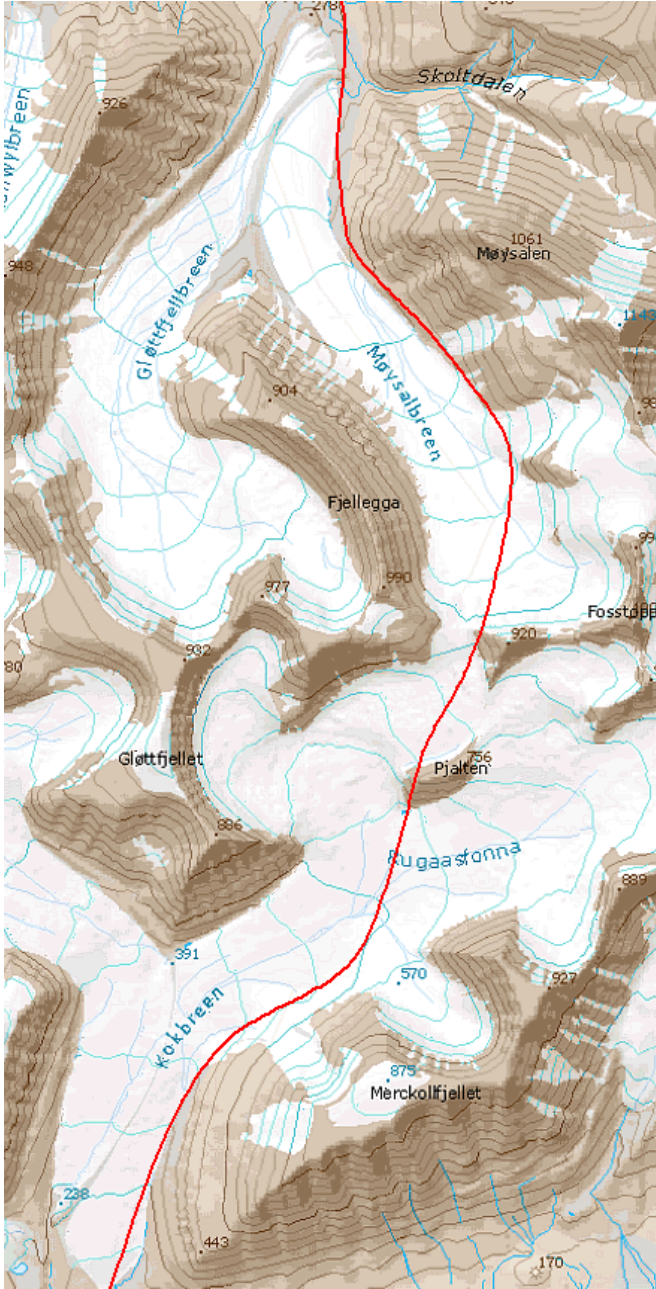
# Breflyvning 10. oktober 2023



Rute flydd: Adventdalen – Møysalbreen – Kokbreen – Slakbreen – Rabotbreen – Fimbulisen – Von Postbreen – Philippbreen – Filchnerfonna – Lomonosovfonna – Mittag-Lefflerbreen – Ragnarbreen – Hørbyebreen – Sefstrømbreen – Hamarbreen – Infantfonna – Dronningpasset – Kongsvegen – Sidevegen – Austre Osbornebreen – Devikbreen – Vintervegen – Borebreen – Nansenpasset – Esmarkbreen – Trygghamna - LYB



# Nedre Møysalbreen





Møysalbreen mot toppen

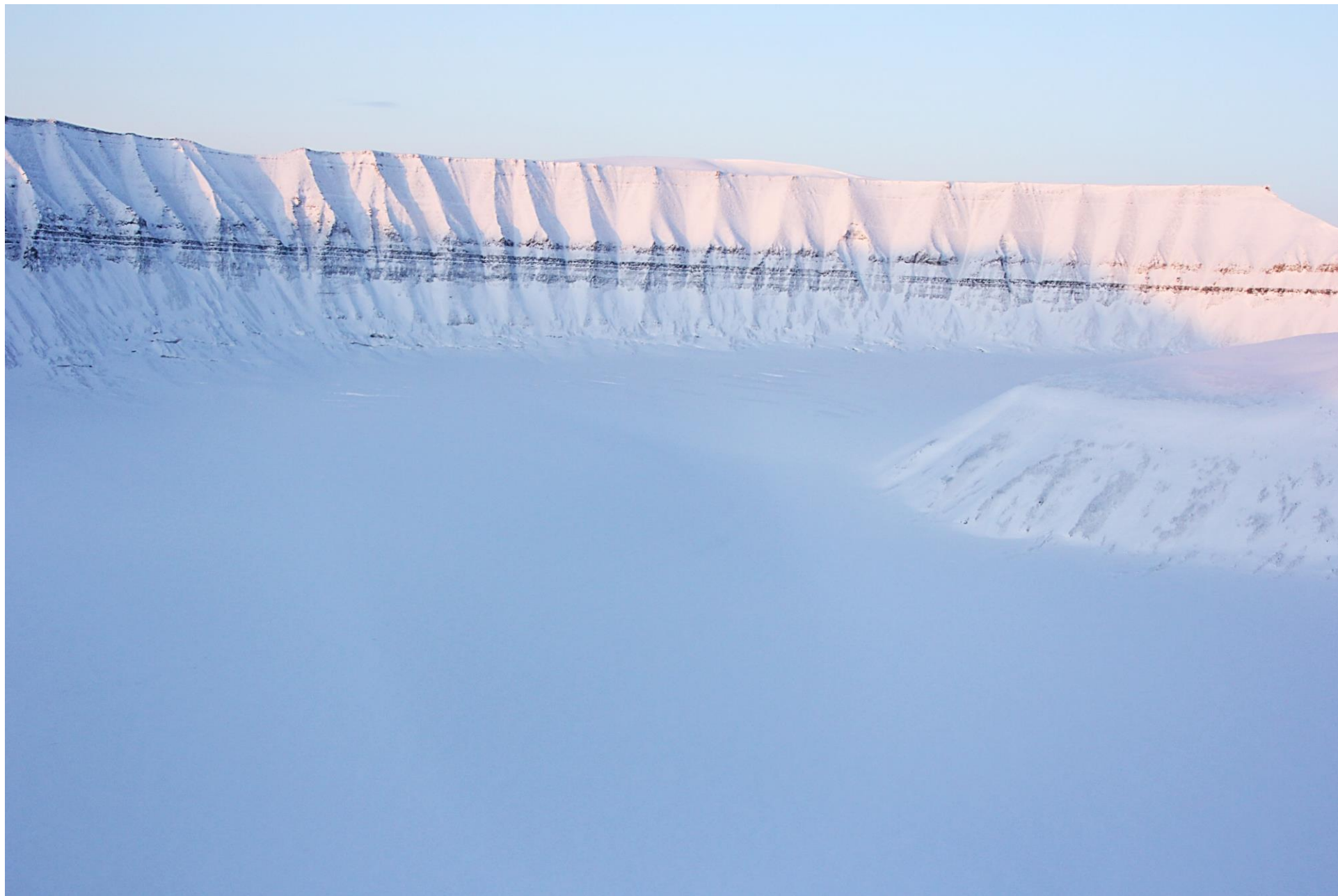


# Passet Møysalbreen





Mot Gløttfjellet, mot V





Rugaasfonna, mot Drønbreen, mot Ø



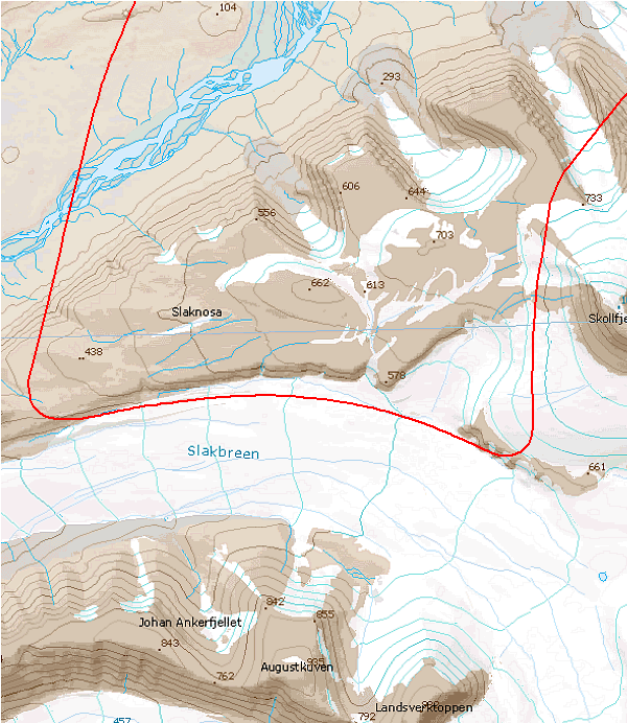


Kokbreen, mot Reindalen





Nedre del Slakbreen



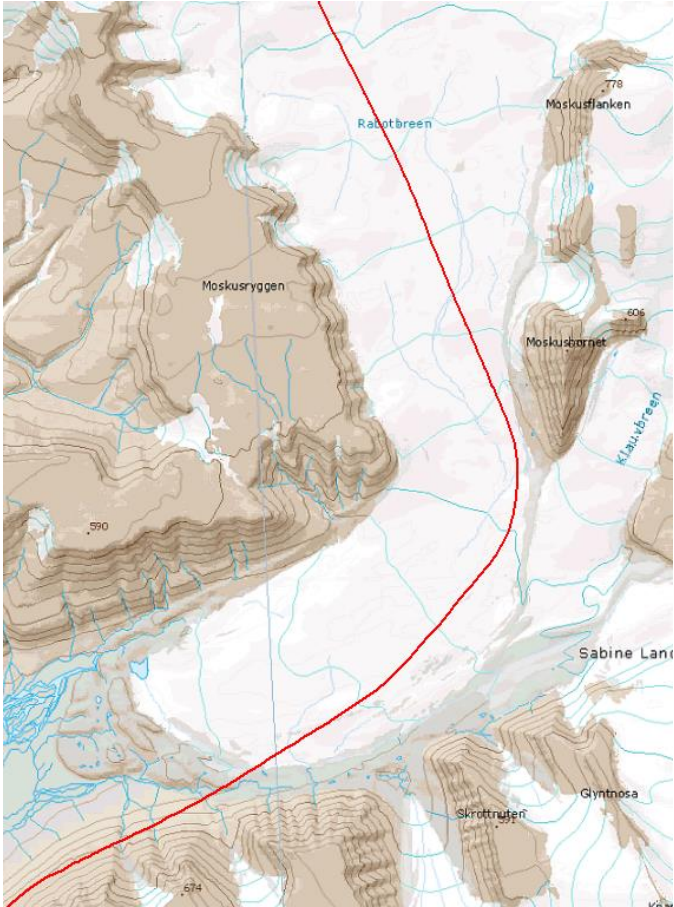


Slakbreen, mot Ø





Opp Rabortbreen, mot N





Ned Rabotbreen, mot Sassen









Phillipbreen, nedre østre del



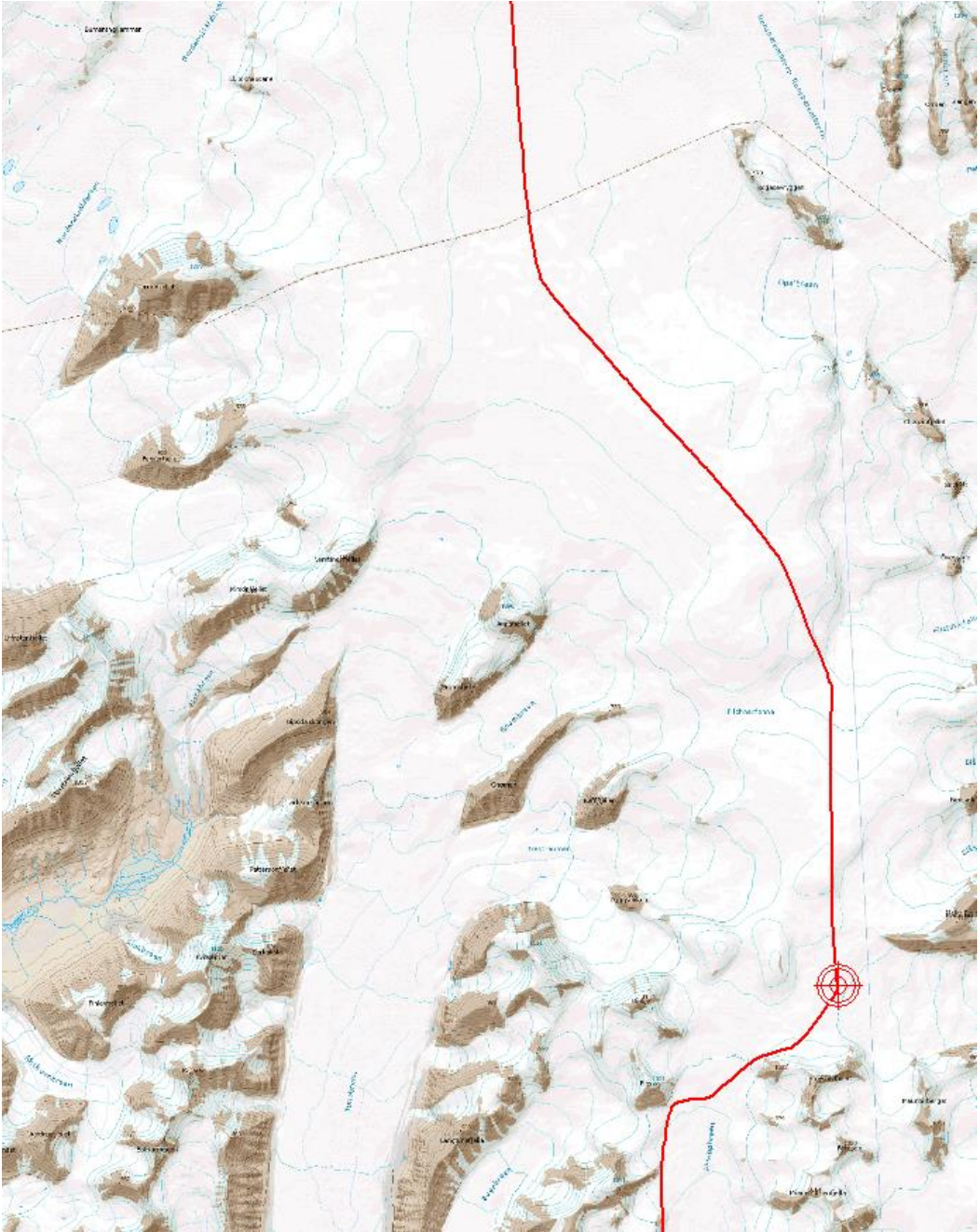


Phillipbreen, nedre del



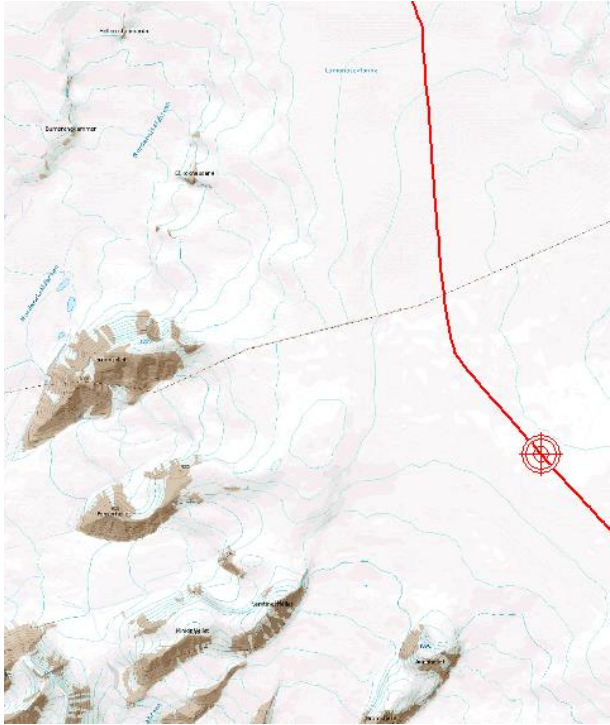


Start Filchnerfonna, mot N





Sving ned mot Nordenskiöld, Tunabreen ned mot venstre



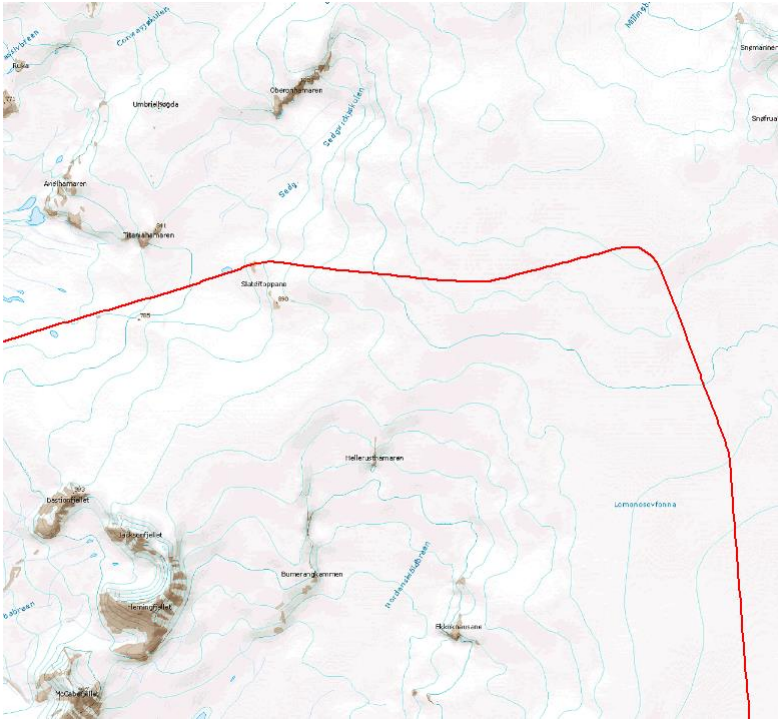


Ferrierfjellet midt imot, Pyramiden i bakgrunnen





Lomonosovfonna, ved svingen mot Mittag-Lefflerbreen, mot V





Hellerusthammaren rett imot, mot Nordenskiöld, mot S





Ned Mittag-Lefflerbreen, Wijdefjorden i bakgrunnen, mot NV







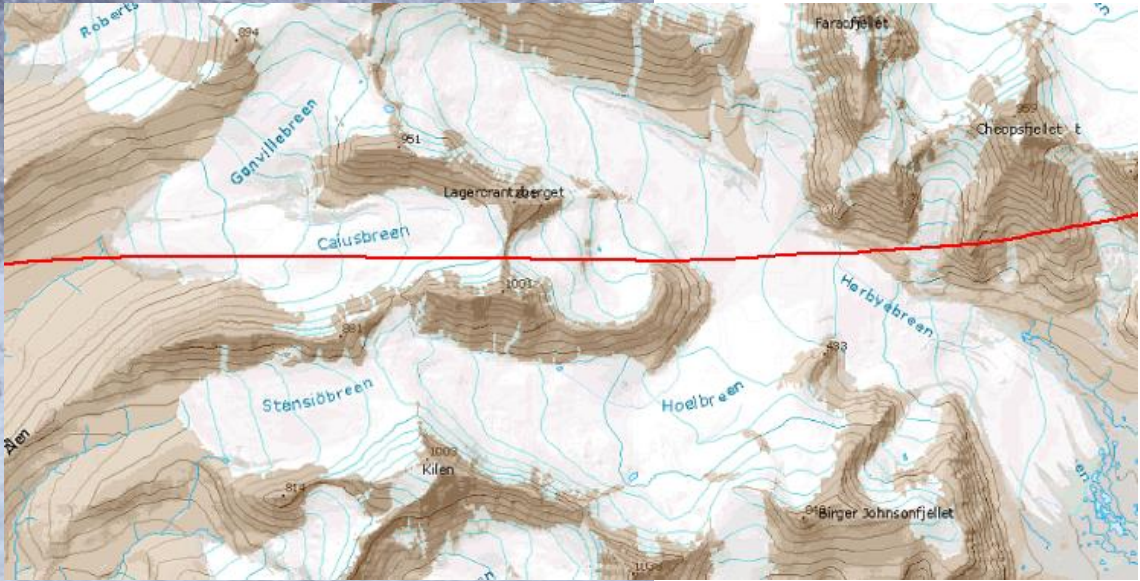


Ragnarbreen





# Nederst Hørbyebreen





Hørbyebreen, mot S

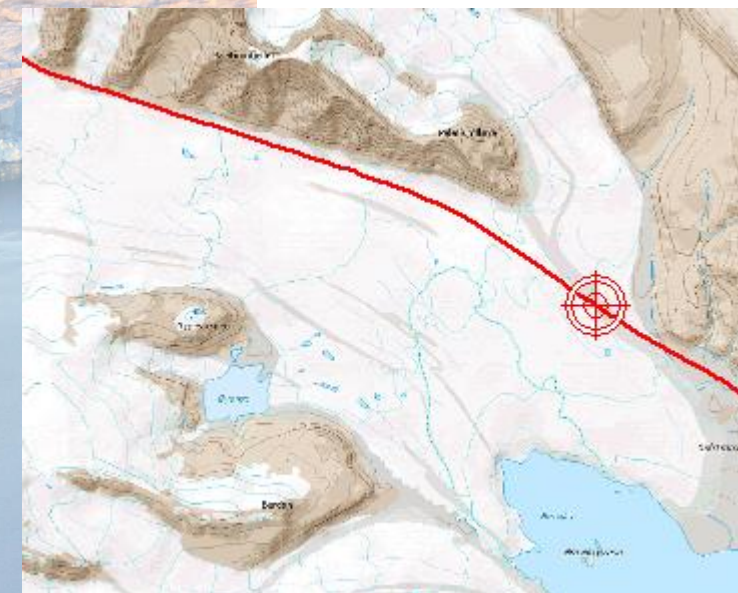








# Sefströmbreen, mot SV





Sefströmbreen





Sefstömbreen i front, Nisserfjellet og Hamarbreen bak, mot V



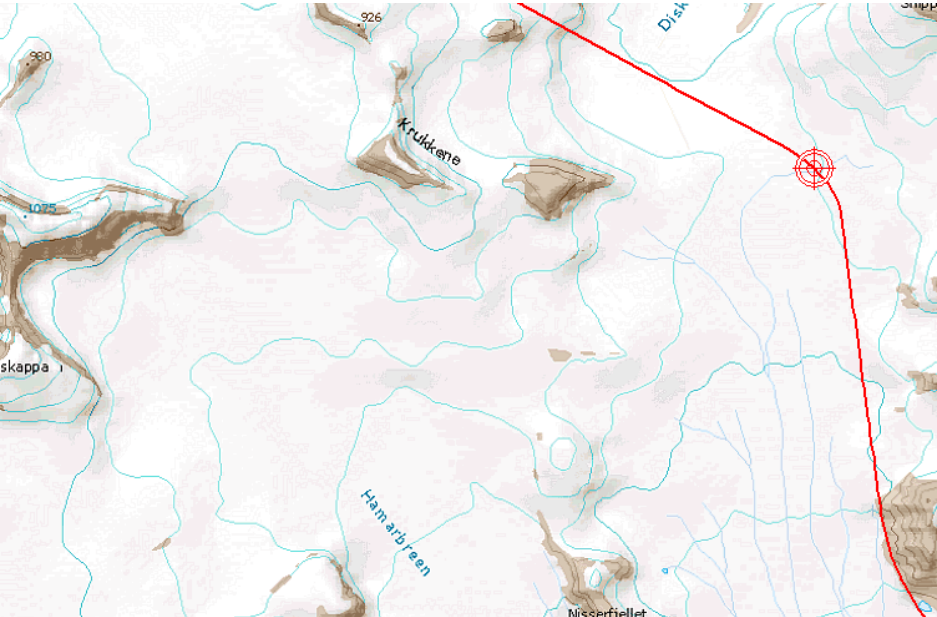


Ned Sefströmbreen, mot S





Mot Hamarbreen, mot SV



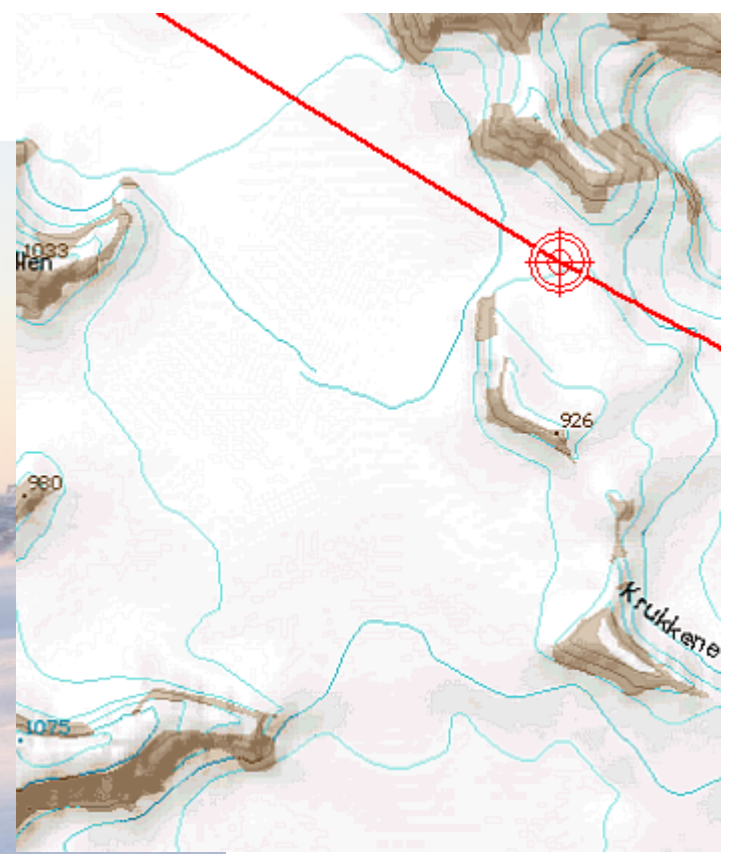


Mot SV



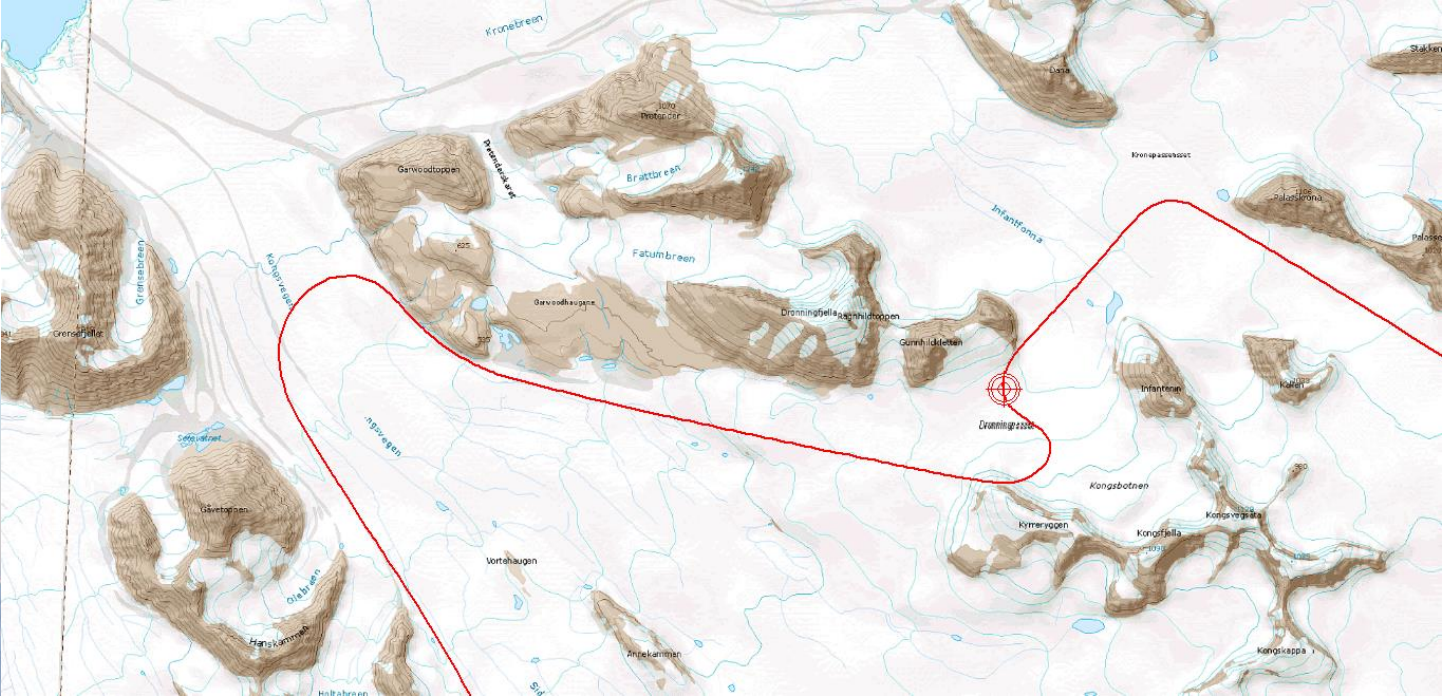


Mot S



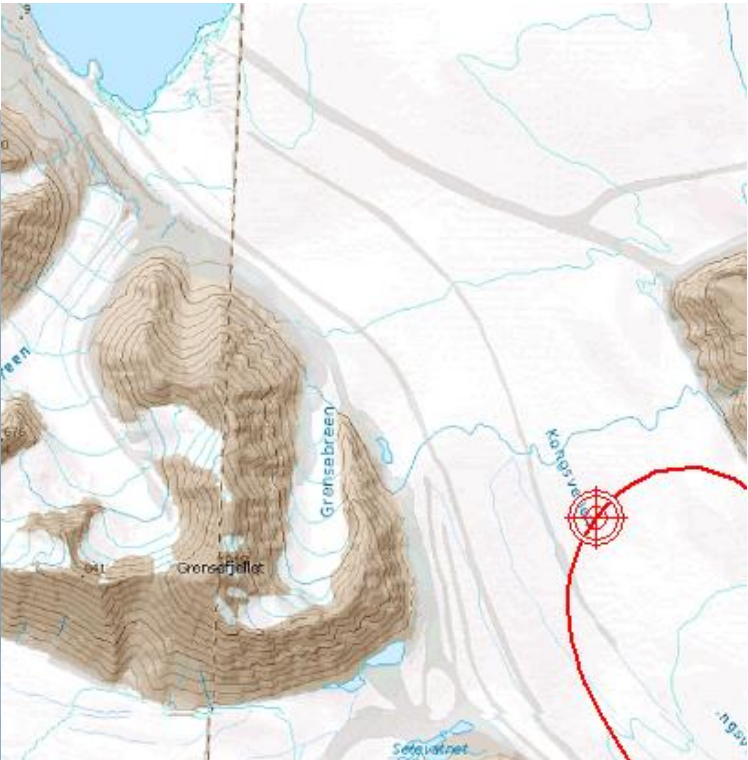


# Dronningpasset, mot Kongsvegen, mot V





Nederst Kongsvegen, vestside





## Gjennomkjøring mot Uværsbreen





Opp Kongsvegen, mot SØ



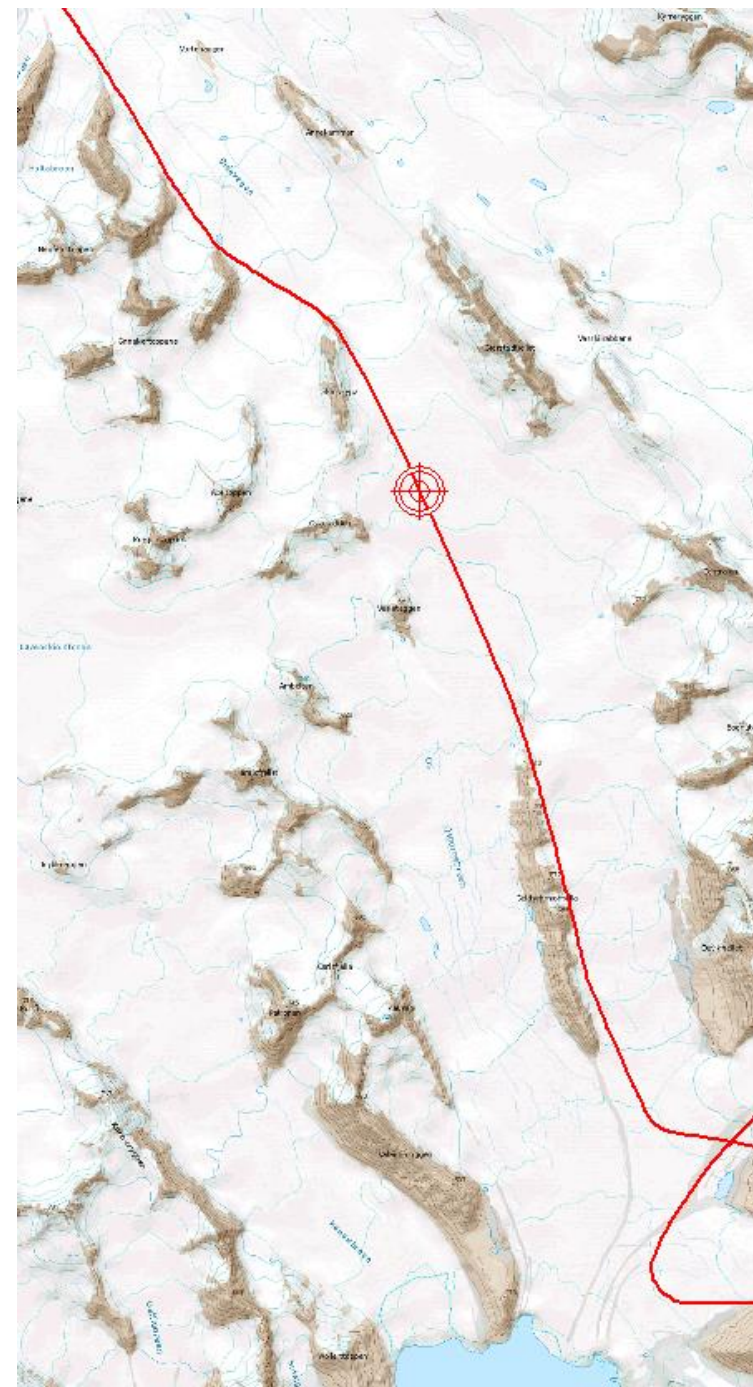


Sidevegen, mot SØ





Øverst på Austre Osbornebreen, mot Ø



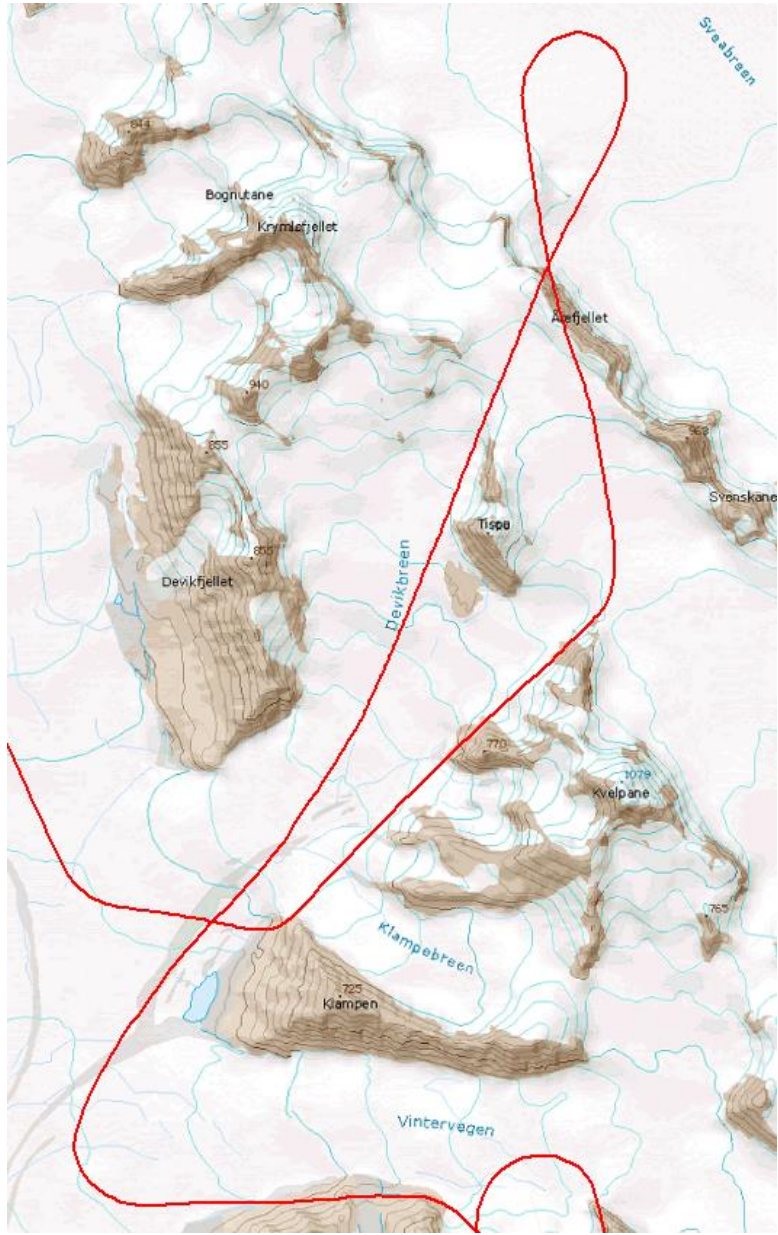


Inngangen til Devikbreen, nederst på Austre Osbornebreen





Devikbreen, mot NØ





Øverst Devikbreen



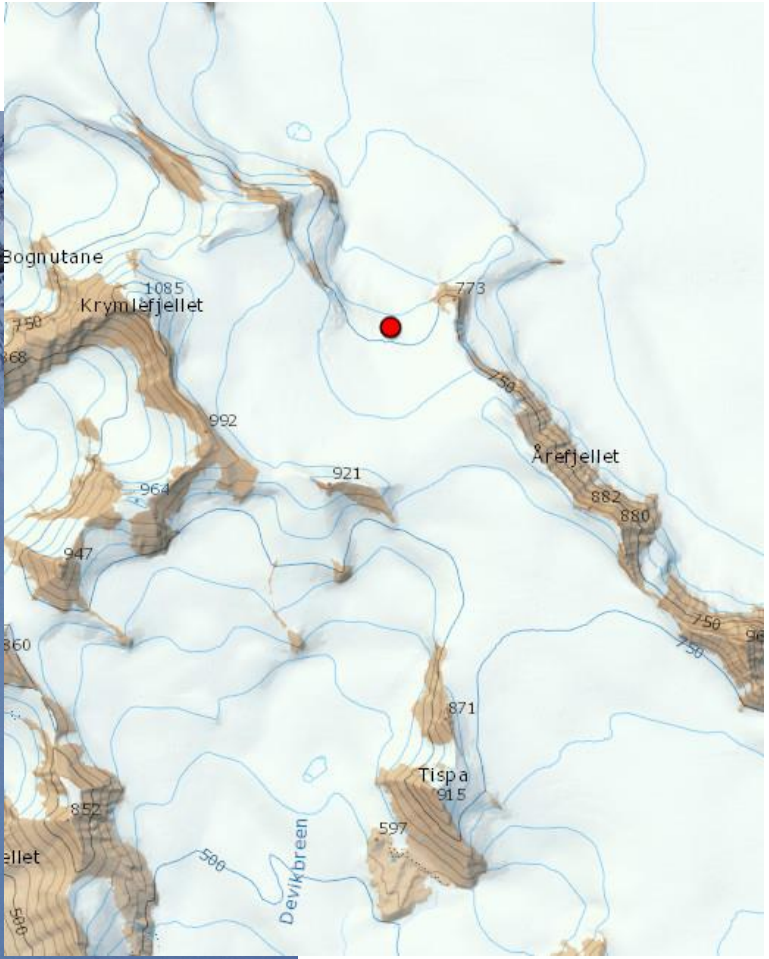


Toppen av Devikbreen, mot N



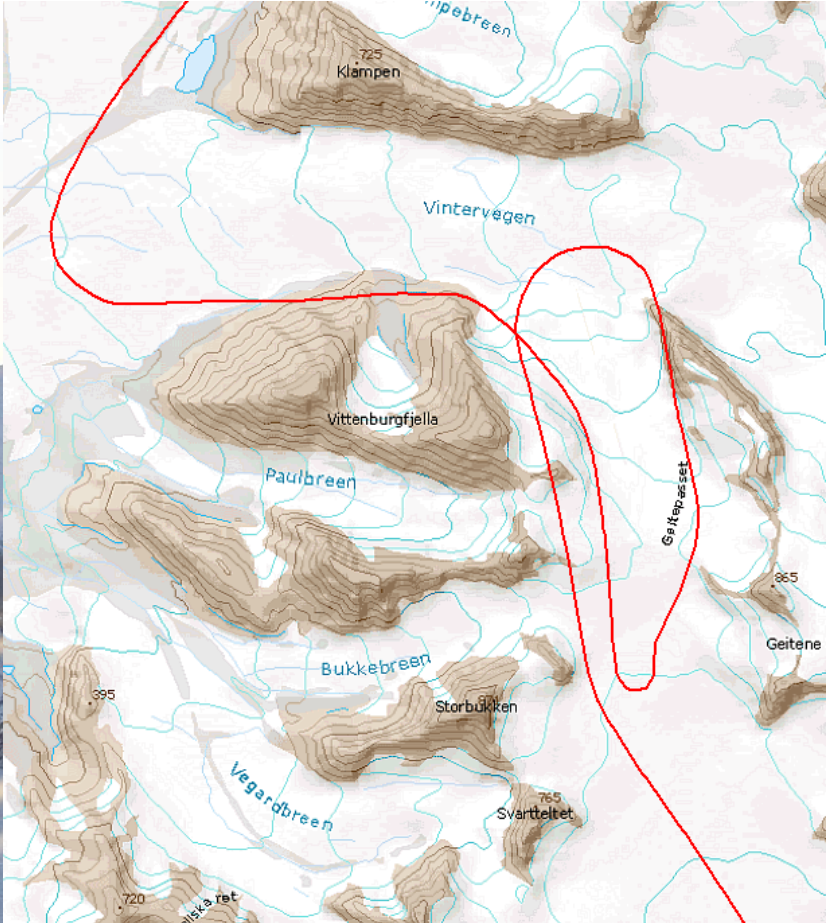
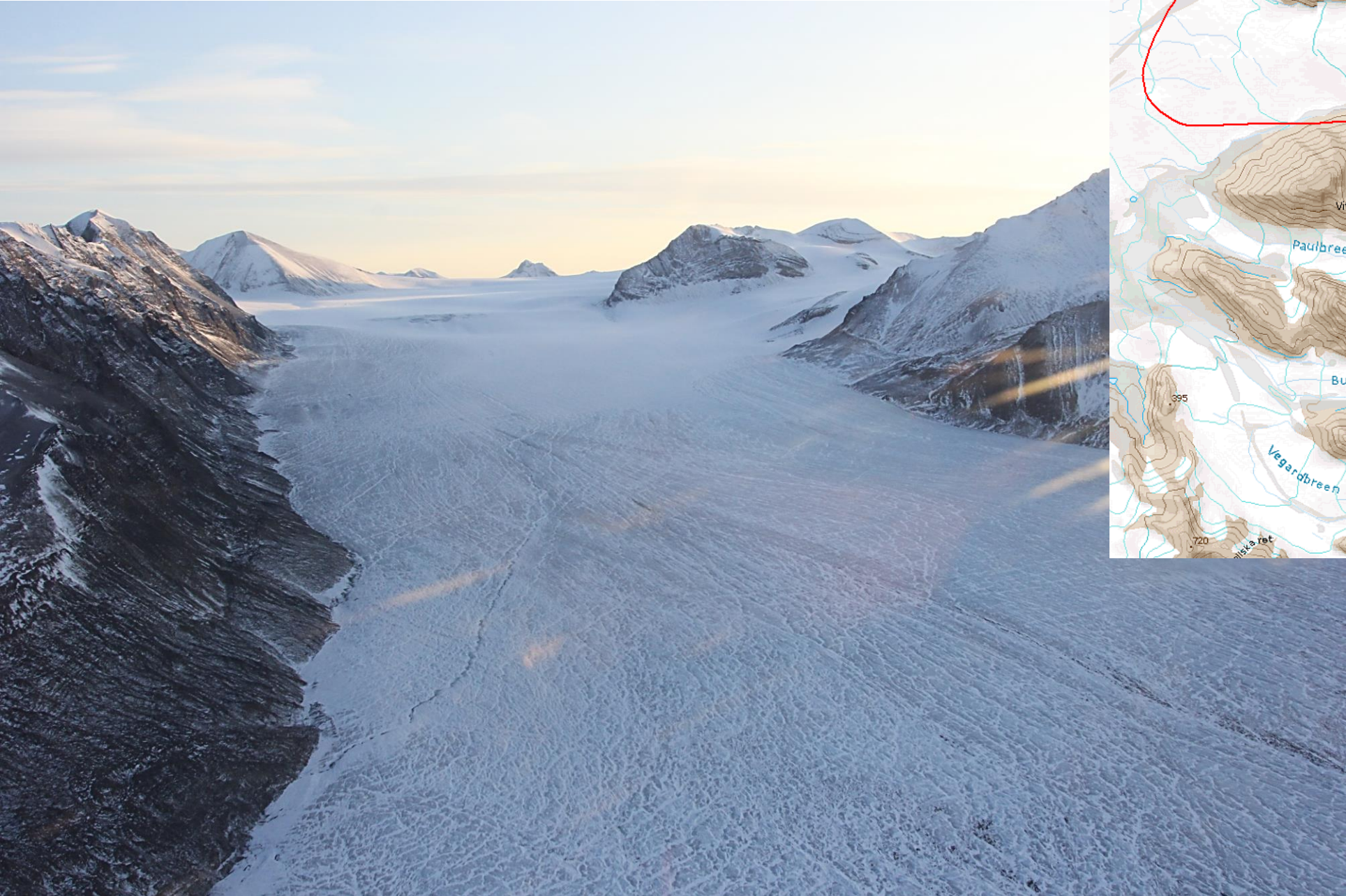


Brefall ned mot Sveabreen



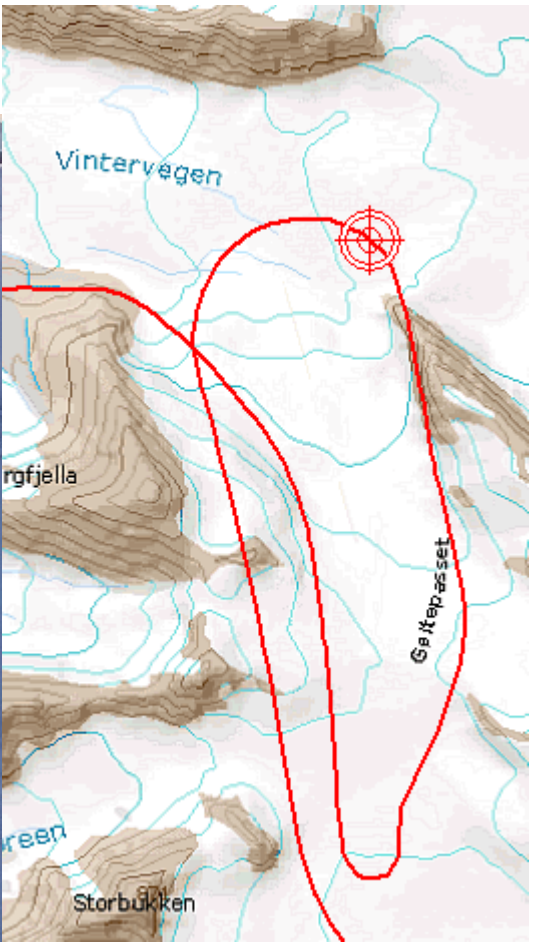


Opp Vintervegen, mot Ø



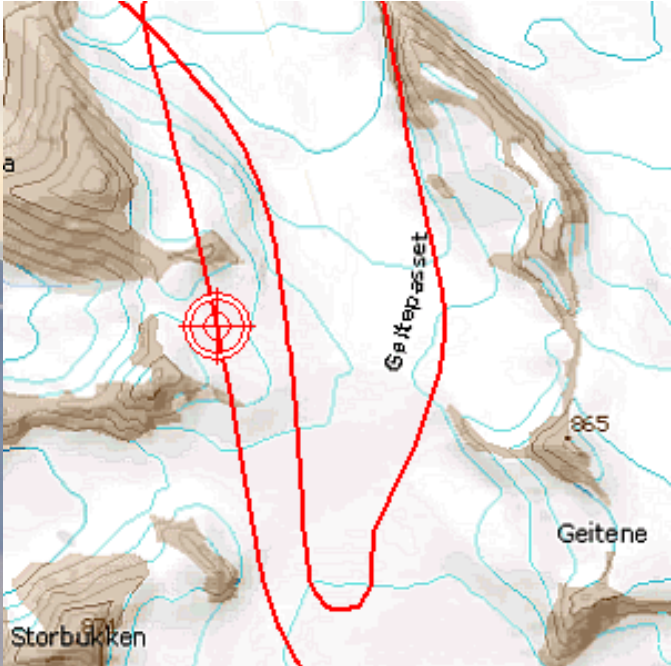


Opp mot Geitepasset, mot S





# Geitepasset









Borebreen, mot Nansenpasset, mot V



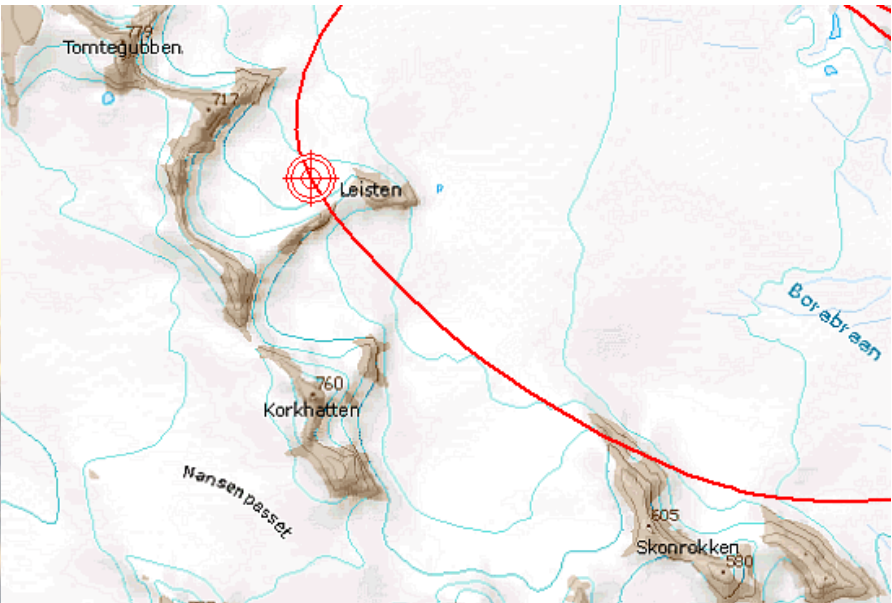


Opp Borebreen, mot NV





Inngang Nansenpasset, mot Borebukta, mot SØ





Nansenpasset, mot V









Esmarkbreen





Opp Esmarkbreen, østre side, mot NØ





Front Esmarkbreen, østre side





Kjerulfbreen, mot NV





Harrietbreen, mot NV





Protectorbreen, mot NV





