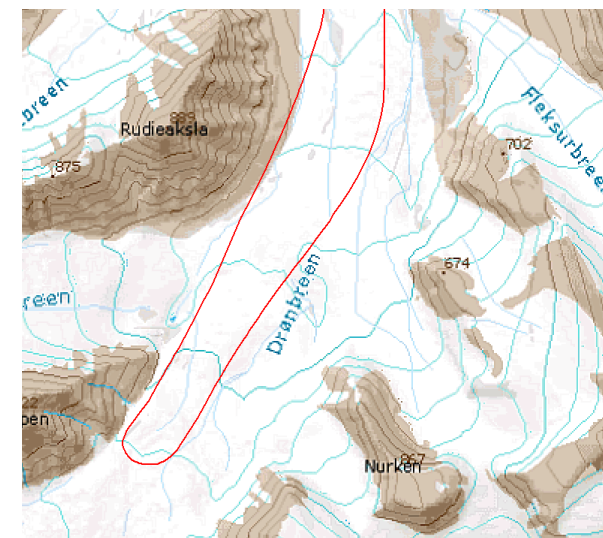


# Breflyvning 09. oktober 2023

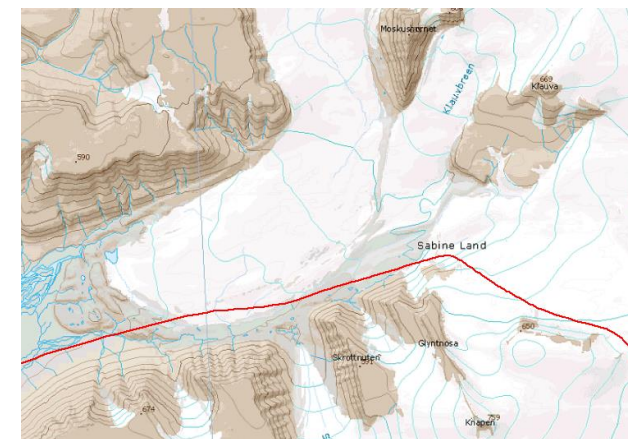


Rute flydd: Adventdalen – Møysalbreen – Drønbreen – Eskerdalen – Sassendalen – Rabotbreen – Nordmannsfonna – Ulvebreen – Usherbreen – Mohnbukta – Königsbergbreen – Agardhdalen – Passbreen – Kjellstrømdalen – Gustavdalen – Danzigdalen – Svalbreen – Bromelldalen – Kvitskarvbreen – Sysselembreen – Akseløya – Kapp Linné - LYB

Drønbreen mot passet Bergmesterbreen, Nurken th, mot S



Rabotbreen nedre



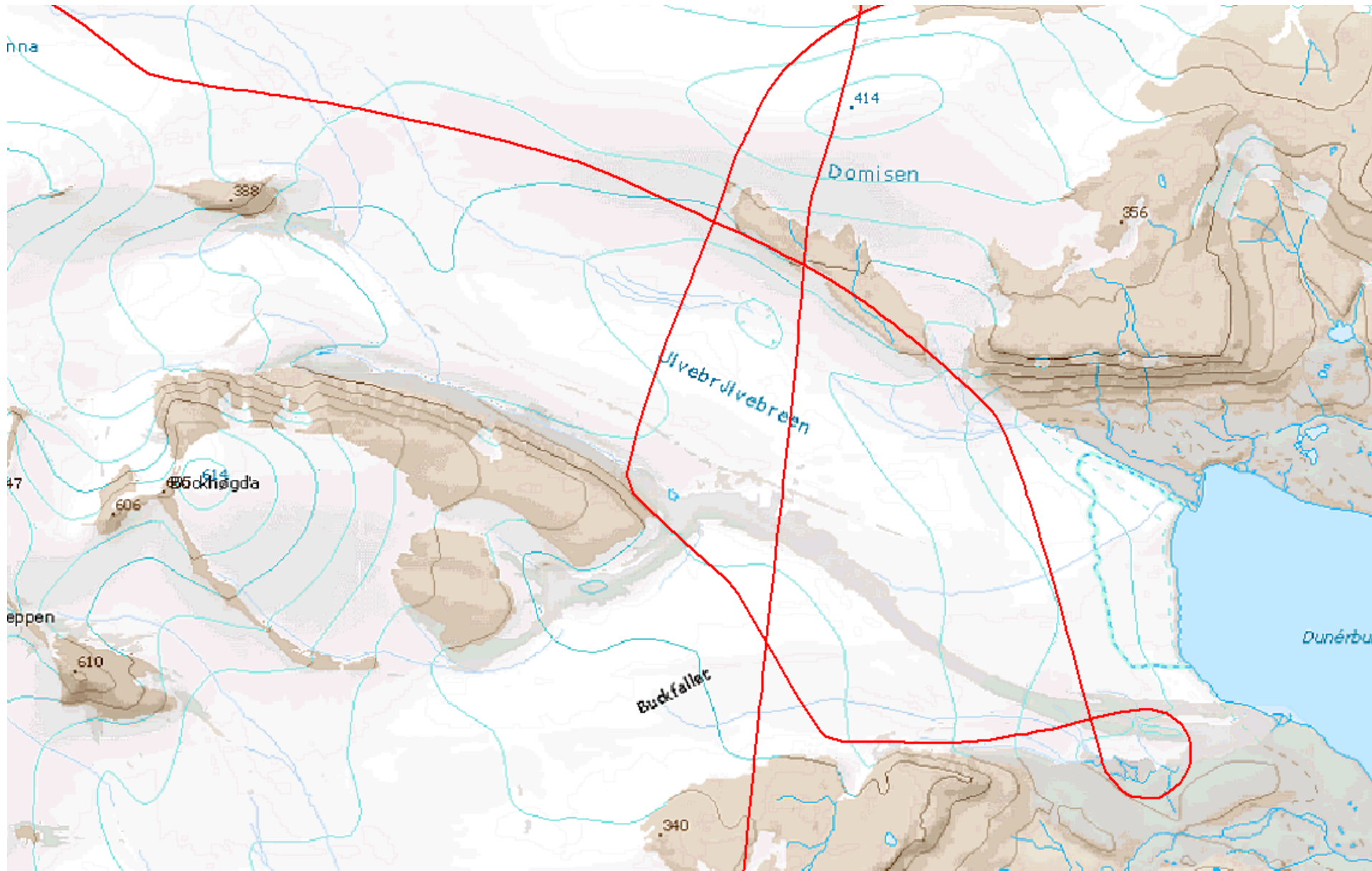
Morene mot Normannsfonna



# Oppkjøring mot Normannsfonna



# Track Ulvebreen



Mot Duner, morene mellom Ulvebreen og Buckfallet















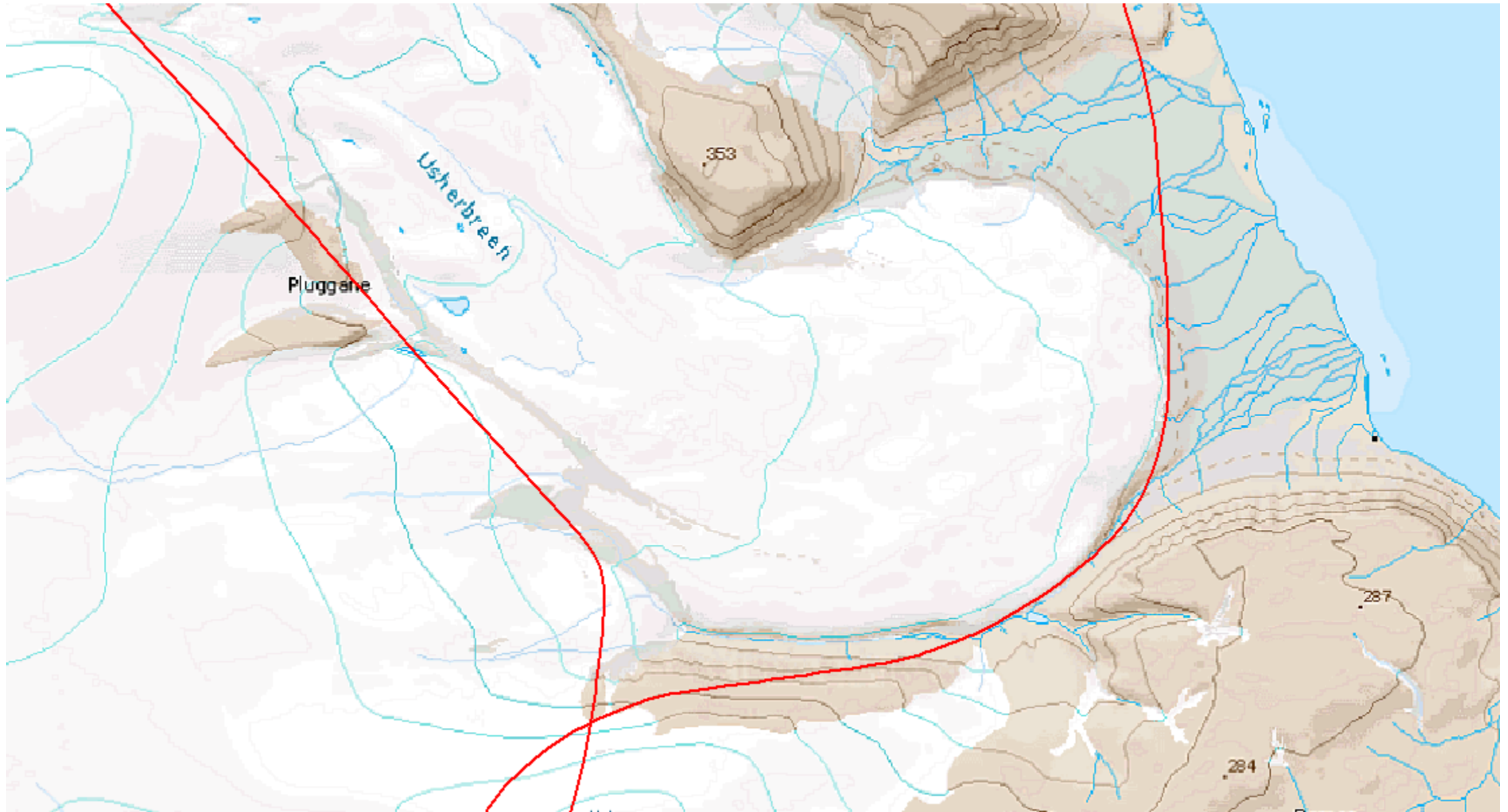












Pluggane, mot nord



A wide, flat, icy landscape under a cloudy sky. The foreground is a vast, flat expanse of light blue and white ice. In the middle ground, there's a darker, more textured area of ice with some small, dark rocks or debris. The background shows a flat horizon line with some distant, low mountains or hills under a heavy, grey sky. A white rectangular box with a black border is overlaid in the upper center of the image, containing the text "Usherbreen nedre".

Usherbreen nedre



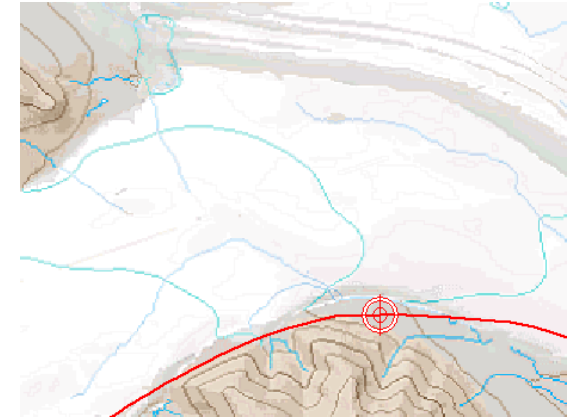
Mellom Hayesbreen tv. og Heuglinbreen th.



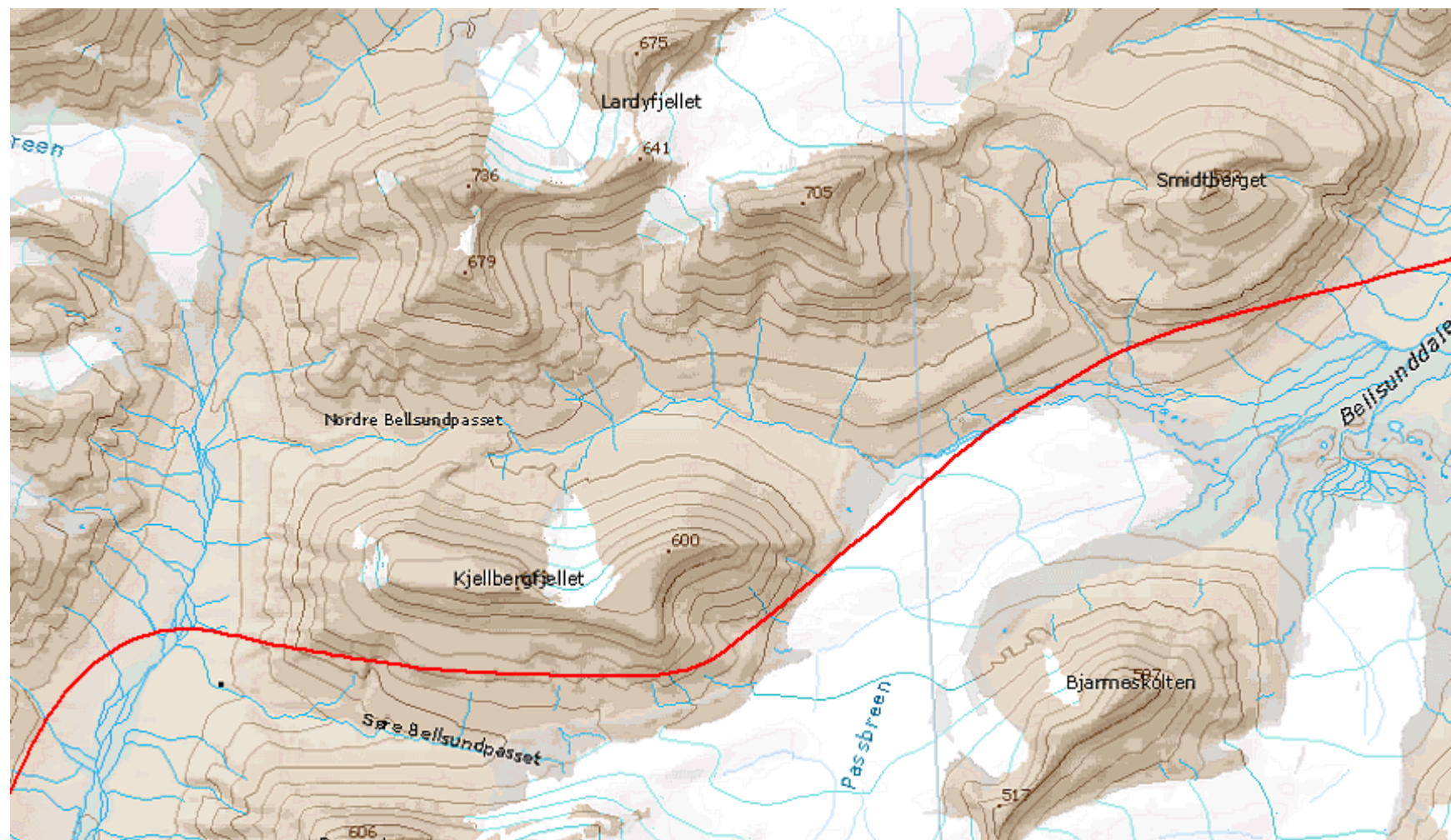
Königsbreen og Hayesbreen, med brefallet inn mot Jebensfjellet



# Smeltevannskanal Königsbreen



## Agardhdalen mot Kjellstömdalen

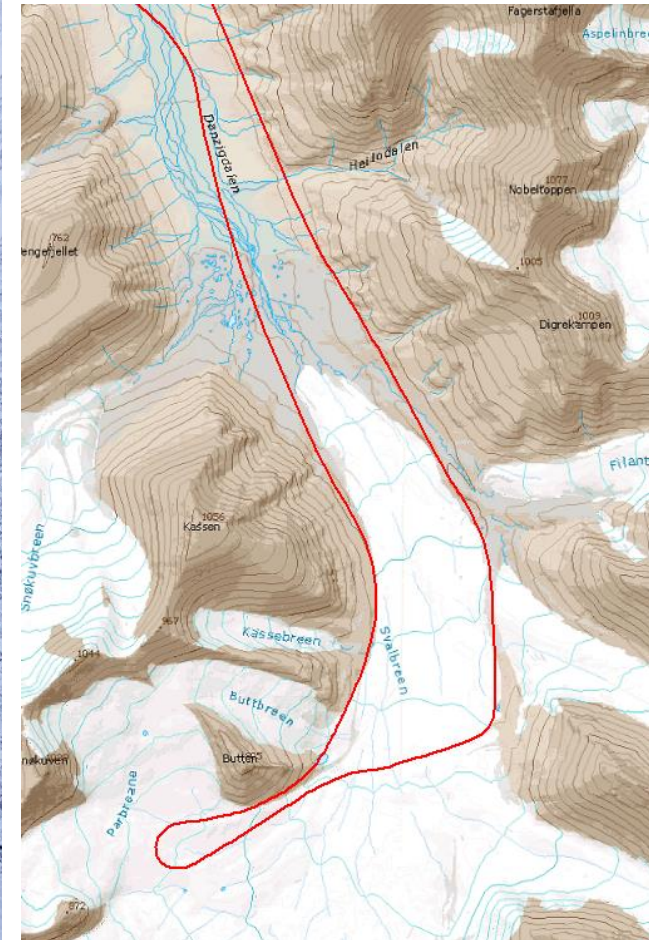




Passbreen



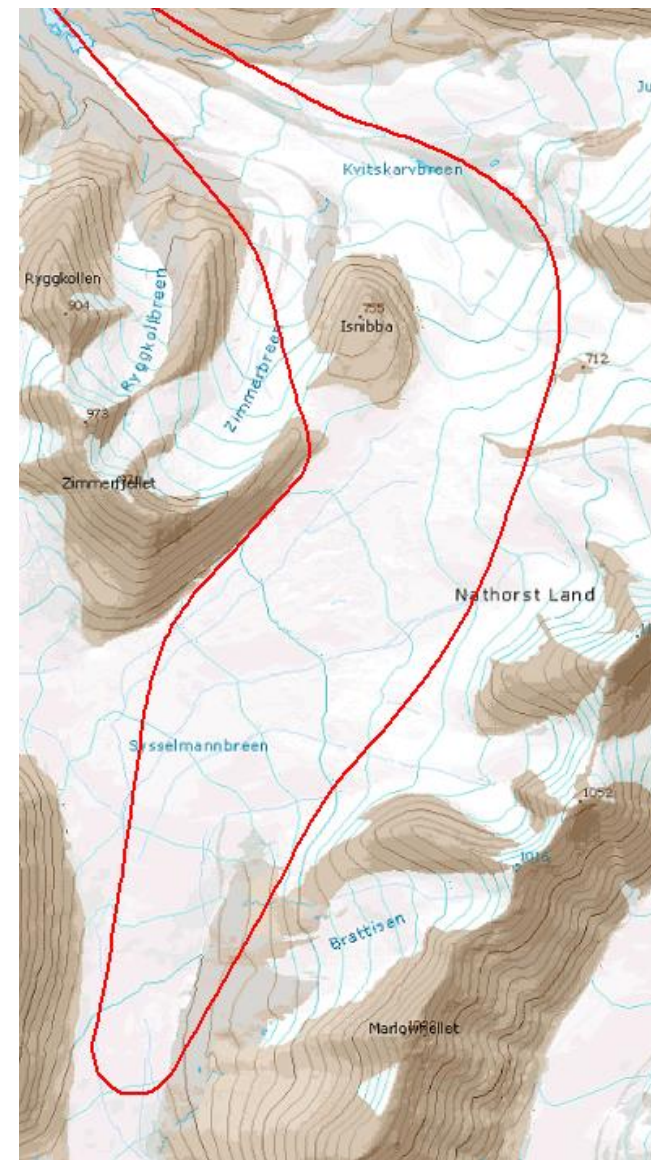
# Nedre Svalbreen



Svalbreen, mot S



# Danzigdalen, Kvitskarvbreen



Ned Danzigdalen, nedre Kvitskarvbre



Kvitskarvbreen



Kvitskarvbreen



Nederst Sysselmansbreen





Sysseimannbreen, oppover

